

NOT TO SCALE



## BALINGUP TWEEN PLAY

### PLAY SPACE DESIGN

#### CONTENTS

- LS 101 LOCATION PLAN
- LS 102 CONCEPT PLAN
- LS 103 PERSPECTIVES

SCOPE OF WORKS ● ● ●

#### GENERAL NOTES

- Planting plan not included.
- Tree locations are to be confirmed on site.
- Finished surface materials and equipment locations vary according to tree locations.



8 Burchell Way  
Kewdale WA 6105  
(08) 9361 1355  
play@natureplaysolutions.com.au

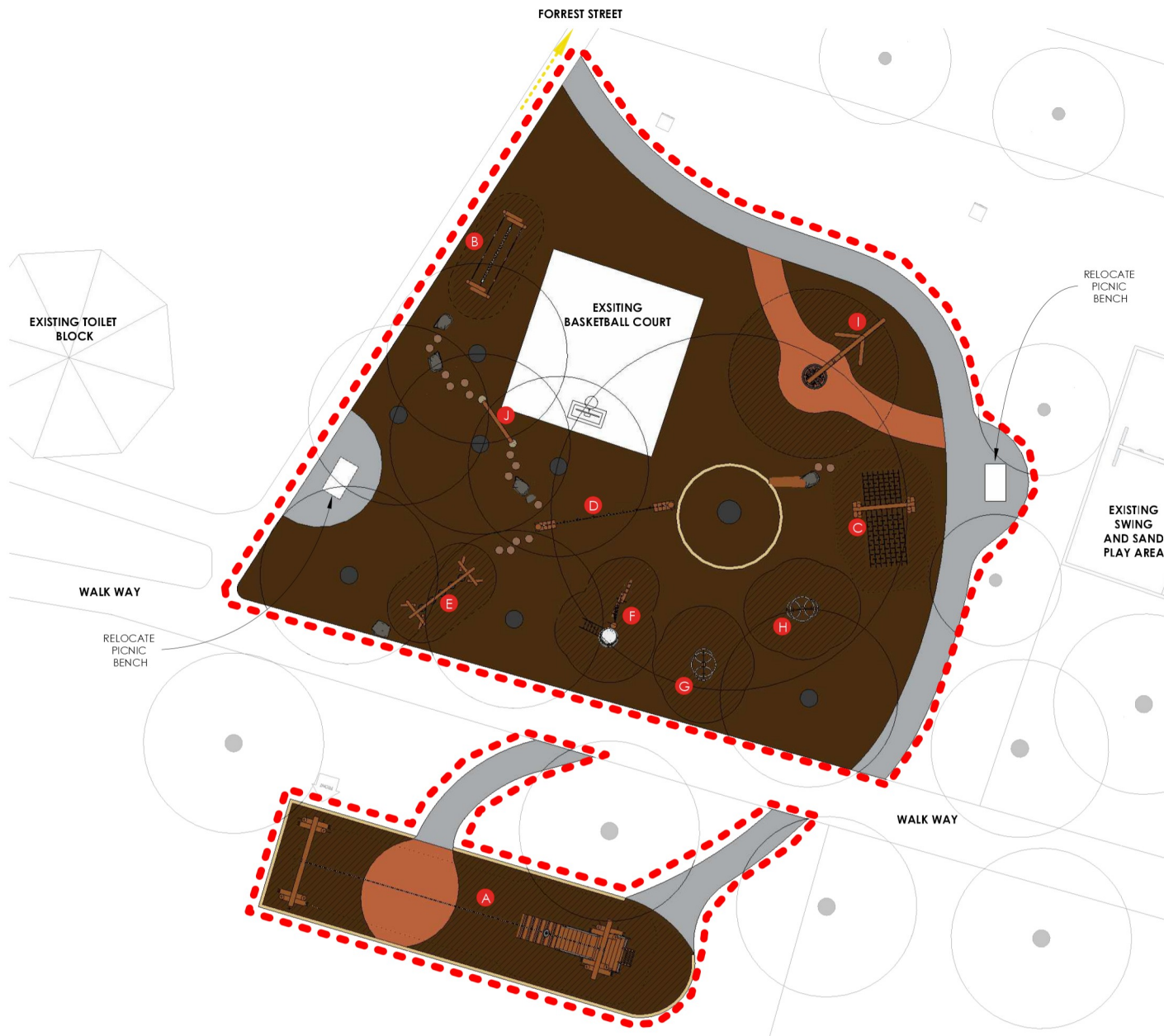
## BALINGUP TWEEN PLAY

30 BRIDGETOWN ROAD, BALINGUP WA 6253

### LS 101 - LOCATION PLAN



Job No: 6492  
Rev: A  
Date: Oct 2025  
Design: NLA



## LEGEND

- A** FLYING FOX - PLATFORM - SINGLE - 15METRES (L055315)
- B** ROPE WALK WITH BUSH POLES (L003600)
- C** HILL CLIMB (L003700)
- D** VINE RUN INGROUND (L006100)
- E** POMMEL WALK (L008800)
- F** CROW'S NEST (L003800)
- G** NEST PERCH 2METRES (L025801)
- H** NEST PERCH 1.5METRES (L025800)
- I** PENDULUM SWING (L006607)
- J** BALANCE SLEEPER - CONCRETE STUMPS (L005206)

- EXISTING (PROTECT AND RETAIN)
- IAS MULCH
- MULCH
- NEW CONCRETE PATH (COLOUR TBC)
- IAS RUBBER (COLOUR TBC)

- ROCK BOULDERS
- CONCRETE STEPPER - PISTACHIO (L010505)
- LOG
- BLOCK EDGE
- EXISTING TREE
- FALL ZONE
- SCOPE OF WORKS





8 Burchell Way  
Kewdale WA 6105  
(08) 9361 1355  
play@natureplaysolutions.com.au

## BALINGUP TWEEN PLAY

30 BRIDGETOWN ROAD, BALINGUP WA 6253  
LS 103 - PERSPECTIVES

Job No: 6492  
Rev: A  
Date: Oct 2025  
Design: NLA