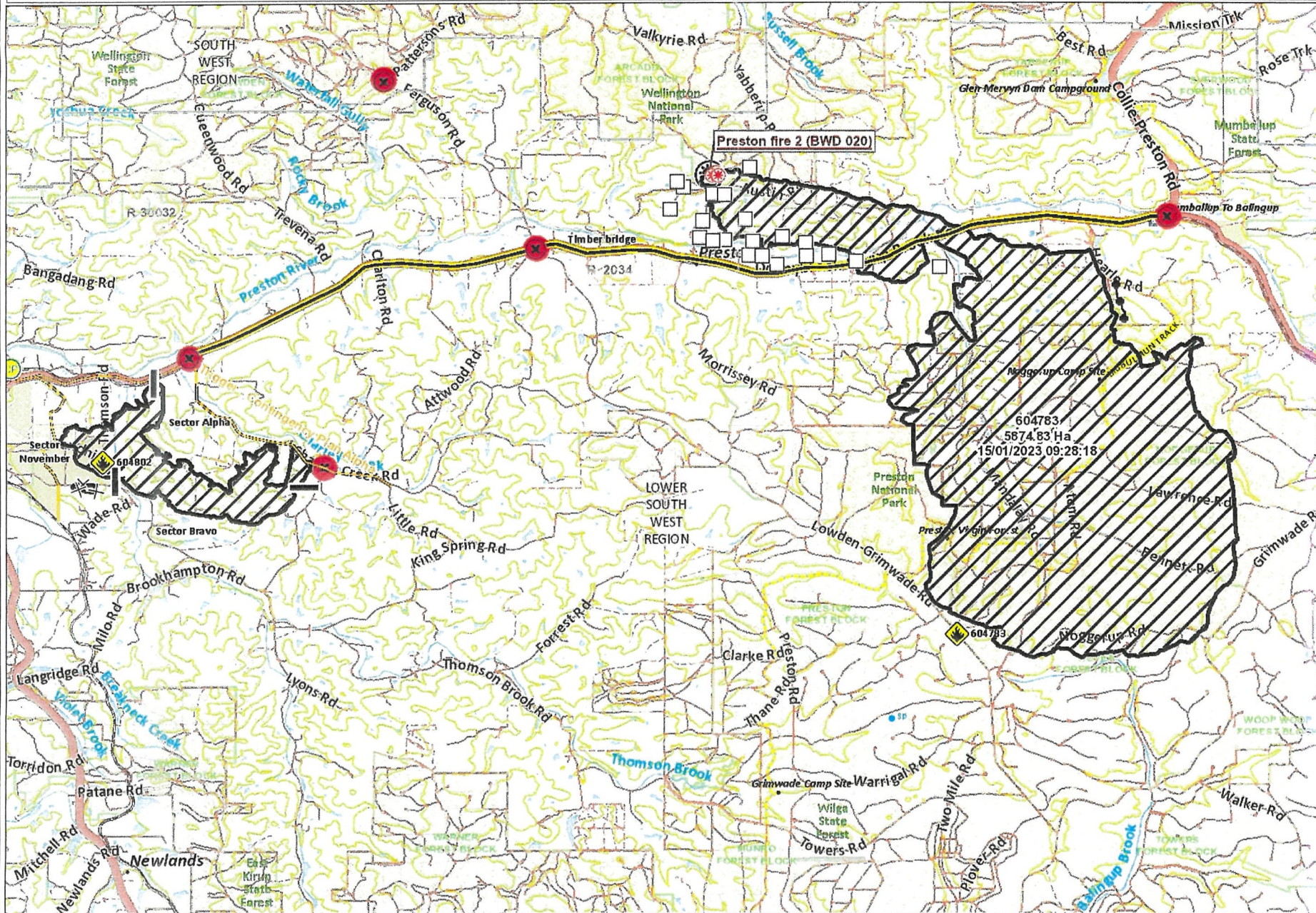


Noggerup BWD020 #604783



Legend

- Fire Shape: Fire Shape, Rural Urban Interface, Restricted Access Permit
- Aerial Ignition: Aerial Ignition Completed, Aerial Ignition Planned
- Bushfire Warning Areas: Emergency Warning, Watch and Act, Advice, All Clear
- Fire Edge: Active Edge, Predicted Edge, Contained Edge, Trigger Line
- Operational Lines: Complete (Control Line, Back Burn, Machine Cut Track, Retardant Line), Planned (Control Line, Back Burn, Machine Cut Track, Retardant Line)
- Sectional Road Closure: Active (Full Closure, Partial Closure, Road Closure), Planned (Full Closure, Partial Closure, Road Closure)
- Vehicle Control Point
- Fire Direction, Fire Origin, Spot Fire, Control Point, Control Centre, Divisional Command, Sector Command, Staging Area, Assembly Area, Base Camp, First Aid, Ambulance Location, Helipad, Helibase, Hydrant, Repeater Location, Fire Direction, Division, Sector, Water Point, Water Point Vehicle, Water Point Helicopter, Asset - General, Asset - Not Defendable, Asset - Potentially Defendable, Indigenous Site, Apiary Site, Endangered Fauna, Endangered Flora, Escape Route, Information, Mobile Weather Station, Refuge Site
- Hot Spots By Age: 0 - 12 Hrs, 12 - 24 Hrs, 24 - 36 Hrs, >36 Hrs
- USAR RDA: Personal, Non-Residential, Infrastructure, Unknown
- Total Damage, Severe Damage, Moderate Damage, Slight Damage, No Damage, Damage Not Stated
- Hazardous Tree Assessment: Assessed and felled, Assessed and not felled, Not Assessed/Tree Assessment Required, Hazardous tree, Machine assistance required
- Fuel Age (YSLB): 1 Yr, 4 Yr, 6 Yr, 8 Yr, 10 Yr, 5 Yr, 7 Yr, 9 Yr

3.0 0 1.51 3.0 Kilometers
 GCS_GDA_1994
 Map created: 16-01-2023 09:05 AM Map created by: Derek Jones



This map is a user generated static output from an Internet mapping site and is for reference only. Data layers that appear on this map may or may not be accurate, current, or otherwise reliable.
 THIS MAP IS NOT TO BE USED FOR NAVIGATION

Notes
 Prepared for Community Meeting pm 1601223 - Donnybrook